

GPST-12 tray with integrated splitter module

TELECOM OUTSIDE PLANT

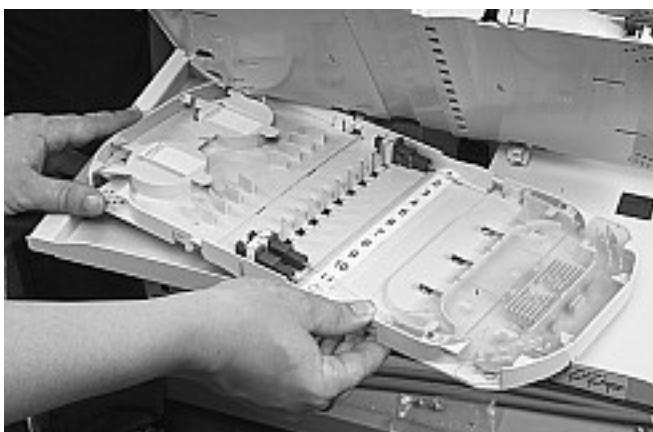
1 Prepare the sub-rack according to the appropriate points of the installation instruction delivered with the sub-rack.

2 Splitter tray installation

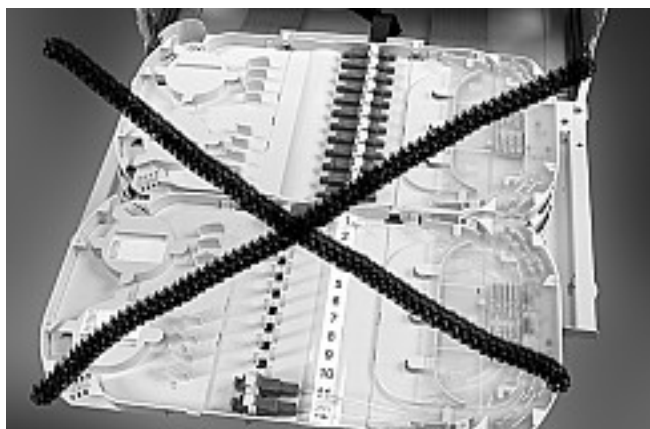


2.1 When necessary, one can remove the appropriate tray by pulling it out of the hinge.

Note: When an empty subrack is ordered, make sure first (bottom tray is a left tray (connector array at left side) (see picture).



2.2 Secure the splitter tray into the sub-rack by pushing it into the hinge. Make sure the tray is inserted in the correct way (numbers 1-12) readable from the front.



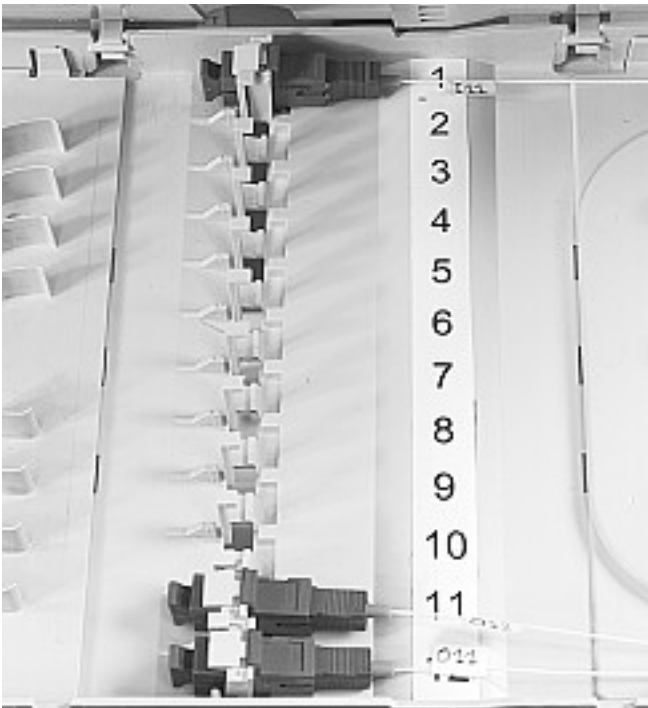
2.3 Make sure that the replaced tray and replacing tray have the same connector position.



2.4 A horn is needed at the side where the pigtails are entering the shelf. Install the horn by positioning it centrally in the opening at the side of the shelf. Align the small knobs with the slots in the side, pull back the two locking lips of the horn and turn until the locking pins click into both positioning holes.

2.5 Continue with the appropriate point in the installation instruction delivered with the sub-rack.

3 Identification



3.1 Connectors are numbered from 1 till 12 as shown on the picture.

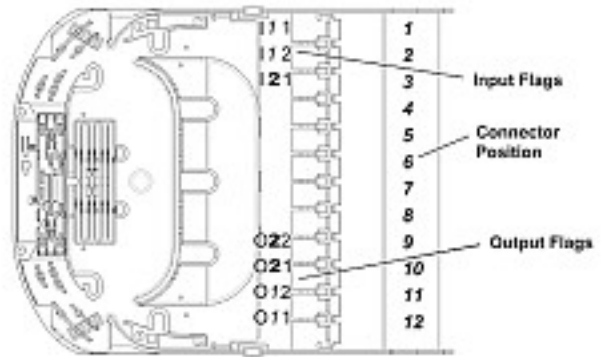


3.2 The identification (printed on the flags next to the connector boot) of the pre-assembled 900 micron pigtails is as follows

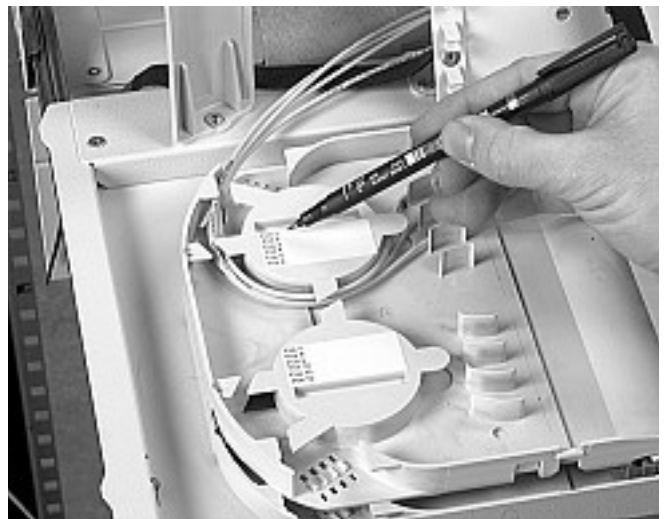
Ixy: I = Incoming side of the splitter (starts on tray position 1)
 x = splitter number
 y = splitter port

Oxy: O = Outgoing side of the splitter (starts on tray position 12)
 x = splitter number
 y = splitter port

In case of asymmetrical splitters, the identification of the ports can be made through the dB value that is written on the back of the flag next to the connector boot.



Example: component 1: 2x2 splitter; component 2: 1x2 splitter
 The drawing shows the connector positions and the flags identification



3.3 Information about the connection can be written on shown labels.

Tyco Electronics Raychem NV

Telecom Outside Plant
 Diestsesteenweg 692
 B-3010 Kessel-Lo, Belgium
 Tel.: 32-16-351 011
 Fax: 32-16-351 697
 www.tycoelectronics.com

The information given herein, including drawings, illustrations and schematics which are intended for illustration purposes only, is believed to be reliable. However, Tyco Electronics makes no warranties as to its accuracy or completeness and disclaims any liability in connection with its use. Tyco Electronics' obligations shall only be as set forth in Tyco Electronics' Standard Terms and Conditions of Sale for this product and in no case will Tyco Electronics be liable for any incidental, indirect or consequential damages arising out of the sale, resale, use or misuse of the product. Users of Tyco Electronics products should make their own evaluation to determine the suitability of each such product for the specific application.