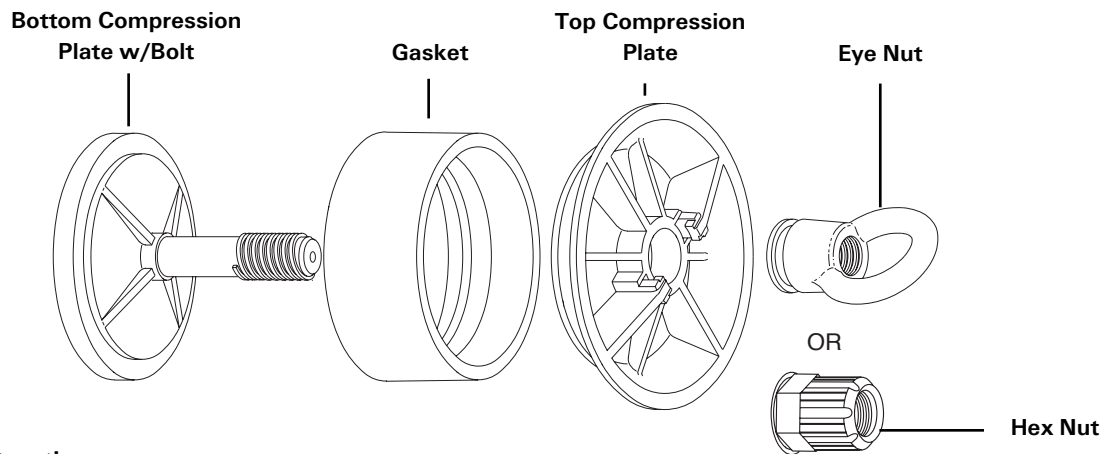


## Components

The blank duct plug is comprised of the following components:

- Plastic top and bottom compression plates
- Plastic eye nut or hex nut
- Rubber gasket



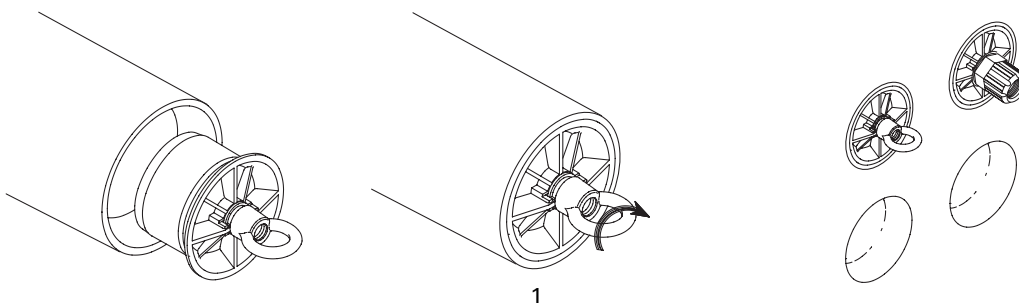
## Installation Instructions

1. Wipe pipe clean with cloth.
  2. Back off eye nut or hex nut enough to relieve any pressure on gasket.
  3. Insert duct plug into duct until gasket is completely inside of duct.
  4. For eye nut: Hold top plate flat against pipe and tighten eye nut until 1 to 3 threads show on bolt through eye nut.  
For hex nut: Hold top plate flat against pipe and tighten hex nut until thread shaft is flush with inside thread of hex nut.
- Duct plugs fit a range of pipe sizes; tightness will vary dependant upon pipe ID within plug ranges.
5. Hand tighten, and then use a screwdriver through eye nut if additional tightening is required. For hex nut, tighten with socket or wrench.

## Blank Duct Plug Tightening Ranges

Duct ID	Thread Exposure
1 inch or less	Bolt is flush to 1/2 thread exposed above eye nut flange.
2 inches to 8 inches	Bolt has 1 to 3 threads exposed above eye nut flange, depending upon duct ID range.

Example: 40D402U with 3.94" duct ID: 1 to 1-1/2 threads exposed.  
40D402U with 4.17" duct ID: 2 to 3 threads exposed.



Sizes and Specifications (dimensions shown in inches/millimeters)

Part No.	Description	Size	Duct Inside Diameter (ID) Range	
		(Inches)	(Inches)	(Millimeters)
542288-000	JM-BLA-07D100U	0.700	0.71 - 0.83	18.0 - 21.1
298182-000	JM-BLA-10D104U	1.000	0.96 - 1.16	24.4 - 29.5
187308-000	JM-BLA-12D148U	1.250	1.14 - 1.48	29.0 - 37.6
F64411-000	JM-BLA-12D163U	1.375	1.30 - 1.63	33.0 - 41.4
036620-000	JM-BLA-15D183U	1.500	1.49 - 1.83	37.8 - 46.5
923104-000	JM-BLA-20D236U	2.000	1.83 - 2.36	46.5 - 59.9
121592-000	JM-BLA-25D296U	2.500	2.34 - 2.96	59.4 - 75.2
162754-000	JM-BLA-30D346U	3.000	2.99 - 3.46	75.9 - 87.9
061704-000	JM-BLA-35D400T	3.500	3.45 - 3.80	86.9 - 96.5
828822-000	JM-BLA-35D400U	3.500	3.45 - 3.80	86.9 - 96.5
758432-000	JM-BLA-35D400N	3.500	3.45 - 3.80	86.9 - 96.5
RH0166-000	JM-BLA-38D401-C	3.800	3.80 - 3.94	96.5 - 100.1
MP0236-000	JM-BLA-40D400T	4.000	3.94 - 4.17	100.1 - 105.9
293842-000	JM-BLA-40D402N	4.000	3.94 - 4.17	100.1 - 105.9
377850-000	JM-BLA-40D402U	4.000	3.94 - 4.17	100.1 - 105.9
D54832-000	JM-BLA-40D402U-C	4.000	3.94 - 4.17	100.1 - 105.9
F90744-000	JM-BLA-50D500U	5.000	4.58 - 5.02	116.3 - 127.5
934754-000	JM-BLA-50D535U	5.000	5.00 - 5.35	127 - 135.9
F76622-000	JM-BLA-55D590U-CR	5.500	5.51 - 5.91	140.0 - 150.1
566534-000	JM-BLA-60D637U	6.000	5.82 - 6.37	147.8 - 161.8
F81950-000	JM-BLA-70D750U-CR	7.000	7.09 - 7.55	180.1 - 191.8
885144-000	JM-BLA-80D816U	8.000	7.83 - 8.27	198.9 - 210.1

Description Extensions Defined:

- T - Temporary Plug
- CR- CR Rubber Gasket
- C - Custom Gasket
- N - Nut Version

*Note: When selecting a Blank Plug, determine the minimum internal diameter of the duct or bore and select the correct plug from the range. Some ducts quoted may provide nominal I.D., such as 100 mm; actual minimum I.D. may be only 98 mm.*

**Tyco Electronics Corporation**

8000 Purfoy Road  
 Fuquay-Varina, NC 27526-3000  
 Tel.: 919-557-8900  
 Fax: 919-557-8498  
 www.tycoelectronics.com

Tyco Electronics and the TE logo are trademarks.

The information given herein, including drawings, illustrations, charts and schematics which are intended for illustration purposes only, is believed to be reliable. However, Tyco Electronics makes no warranties as to its accuracy or completeness and disclaims any liability in connection with its use. Tyco Electronics' obligations shall only be as set forth in Tyco Electronics' Standard Terms and Conditions of Sale for this product and in no case will Tyco Electronics be liable for any incidental, indirect or consequential damages arising out of the sale, resale, use or misuse of the product. Users of Tyco Electronics products should make their own evaluation to determine the suitability of each such product for the specific application.